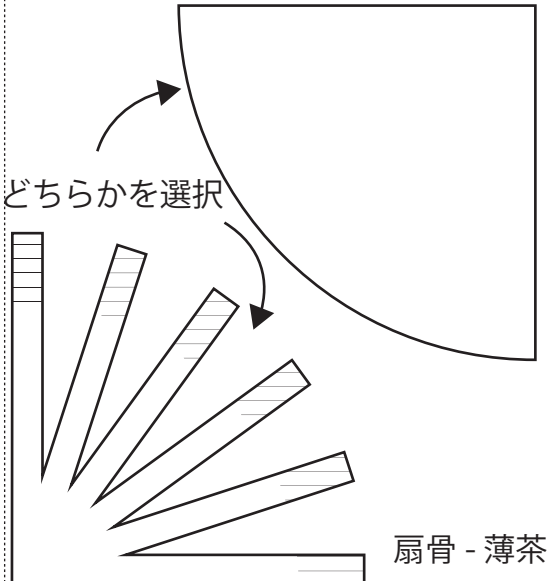
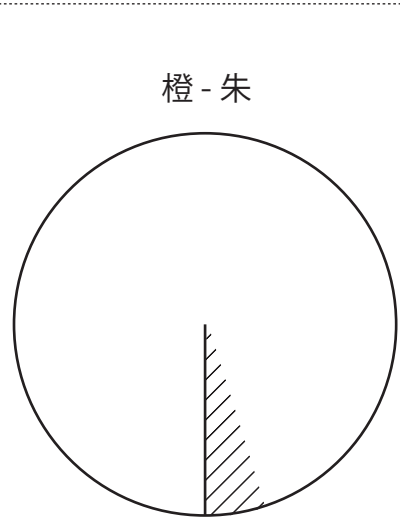


扇骨に代わるパーツ - 薄茶

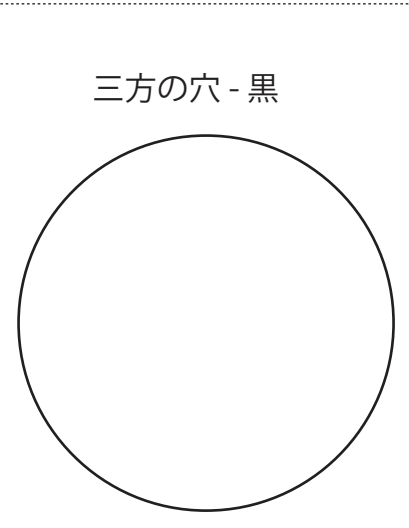
三方 - 薄茶



扇骨 - 薄茶



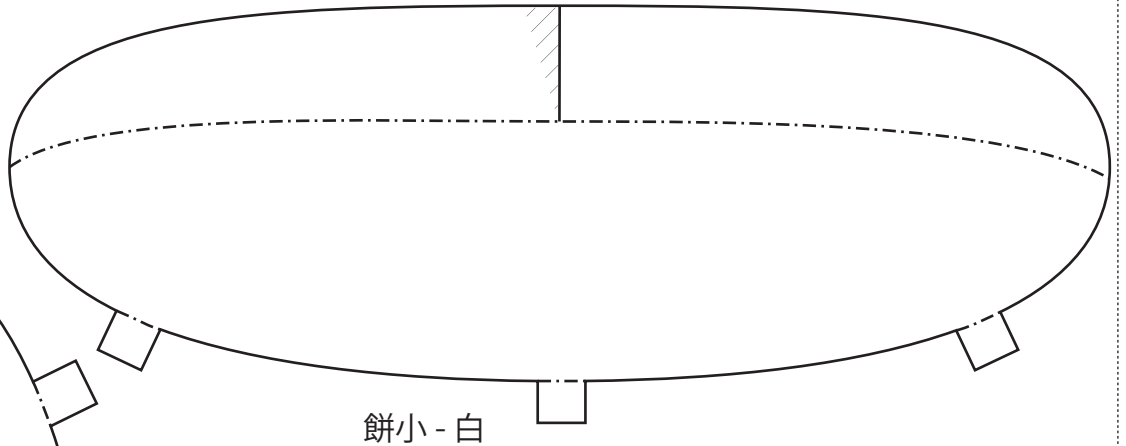
橙 - 朱



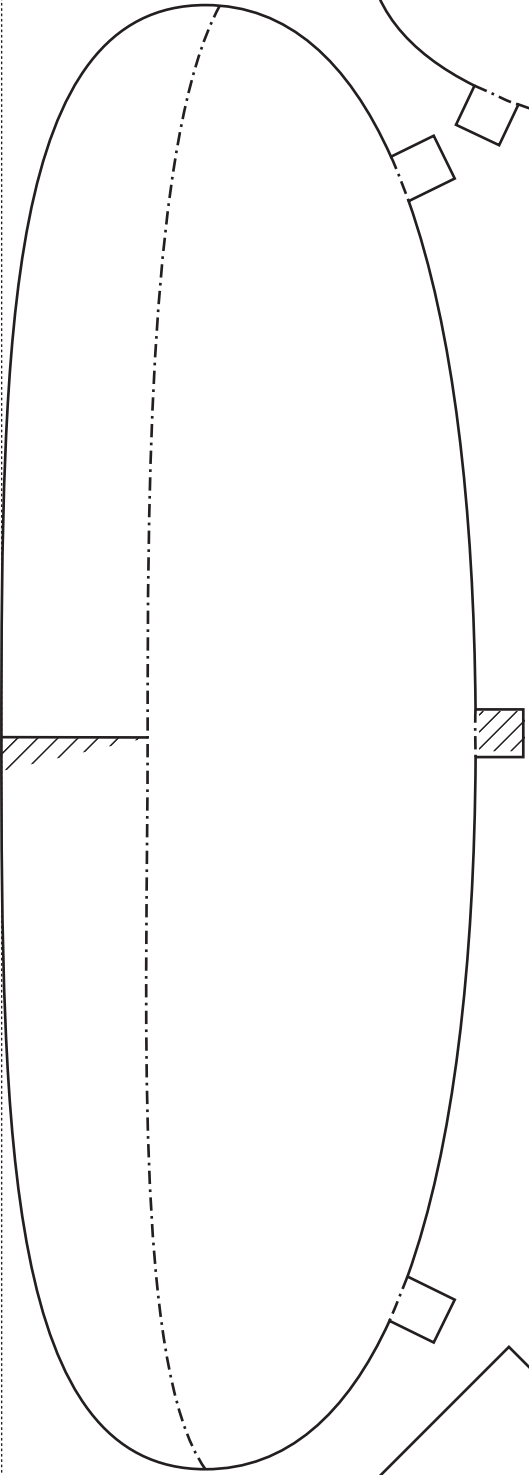
三方の穴 - 黒



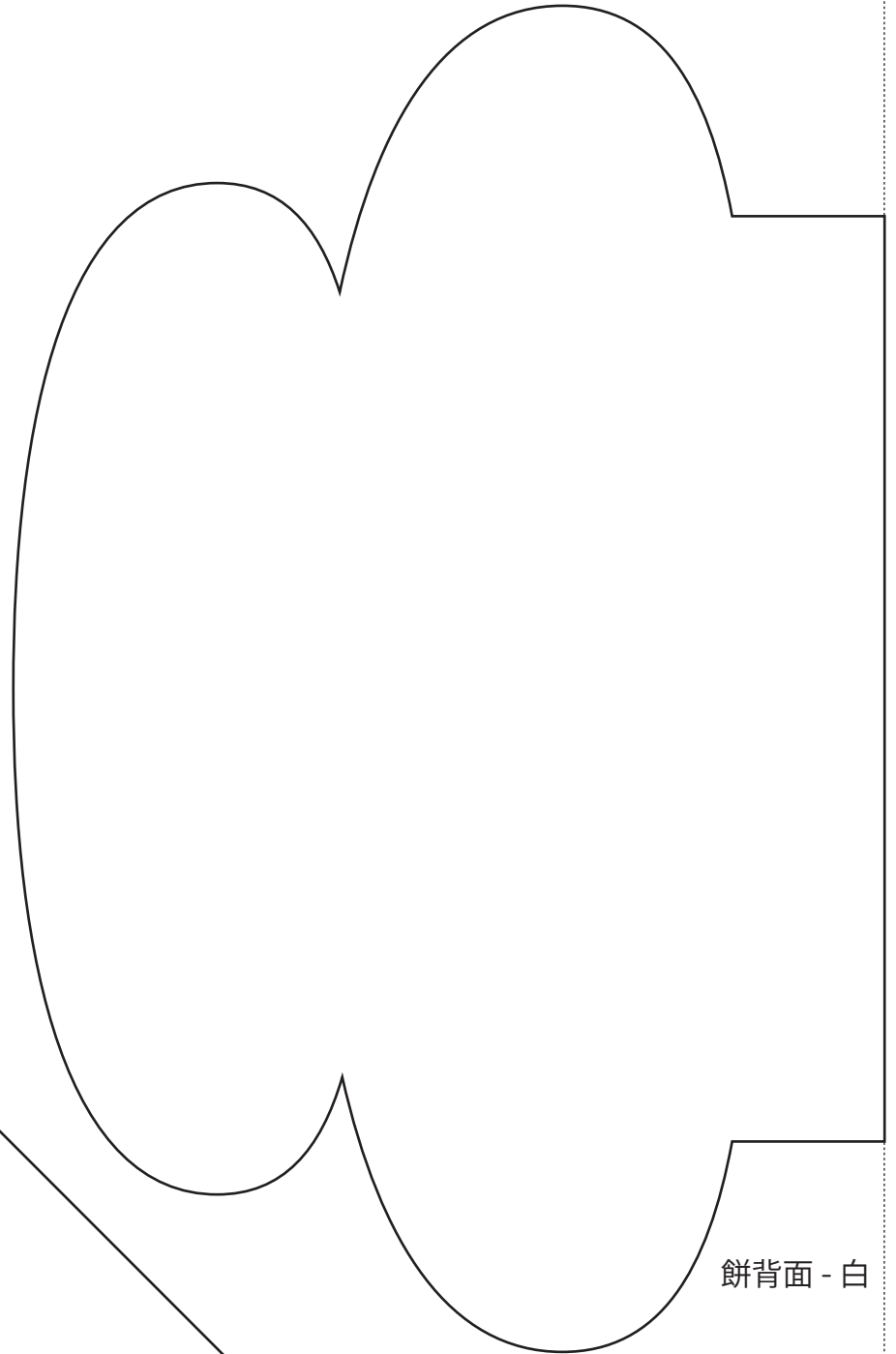
1月 - 鏡餅 (印刷用紙 A4 サイズ)



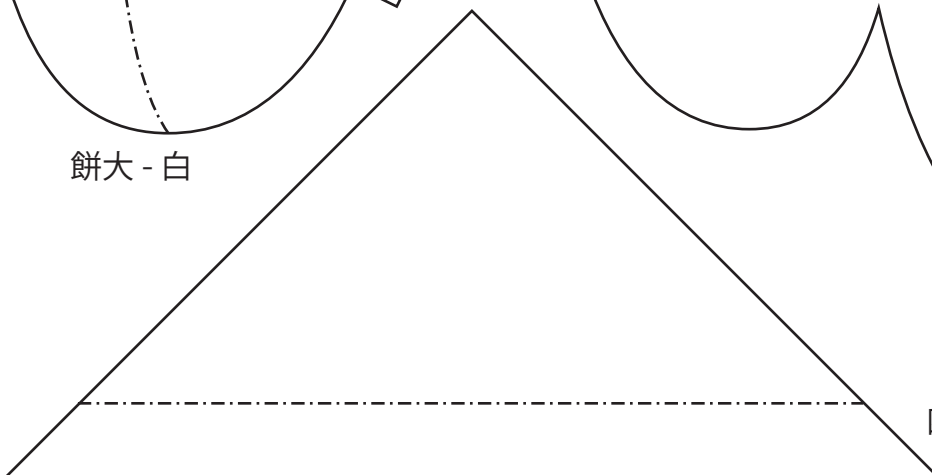
餅小 - 白



餅大 - 白



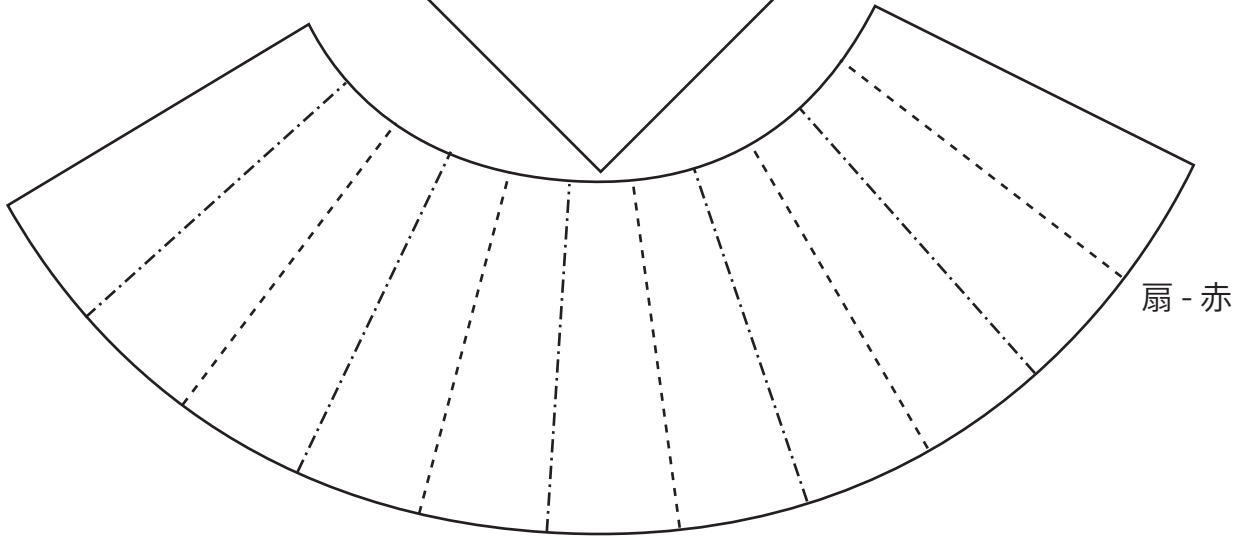
餅背面 - 白



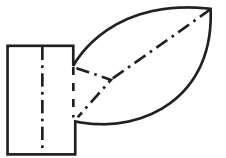
四方紅 - 白



四方紅 - 赤

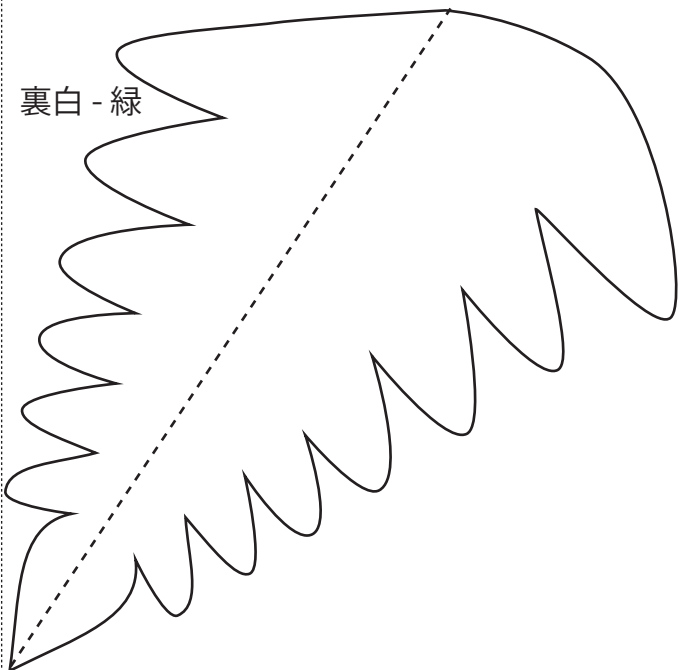


扇 - 赤



橙の葉 - 緑

裏白 - 緑



裏白 - 緑

